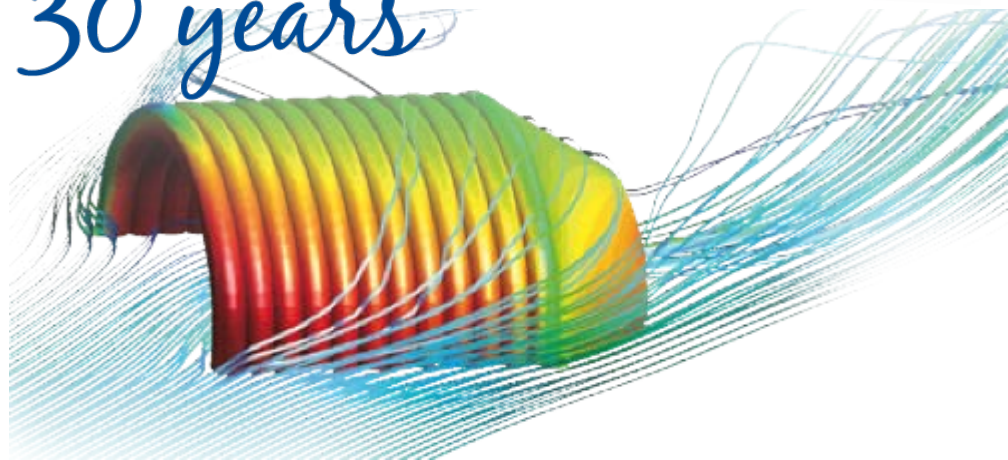
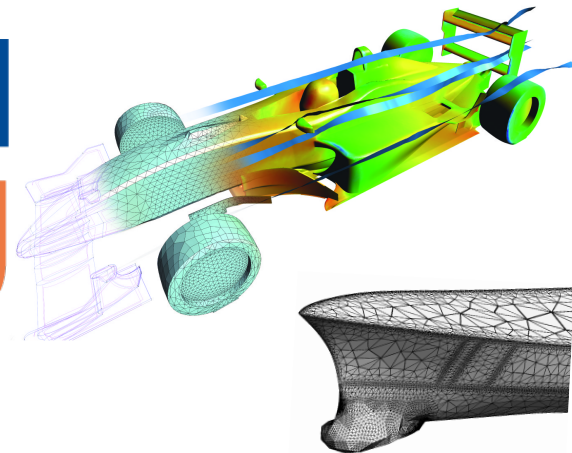


1 9 8 7 - 2 0 1 7

**CIMNE<sup>R</sup>**

*towards 30 years*

Cecília Soriano  
RTD Manager



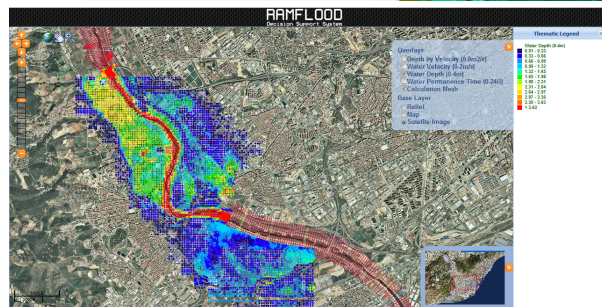
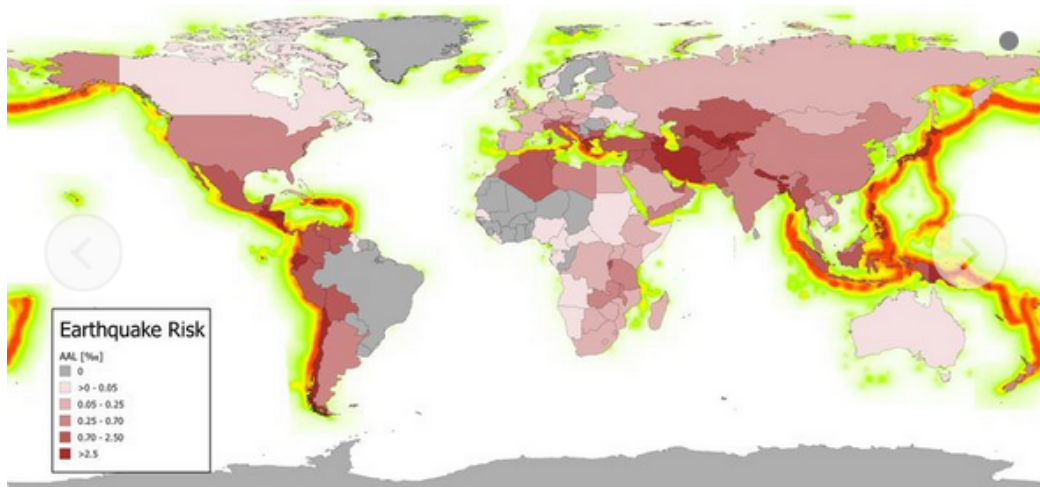
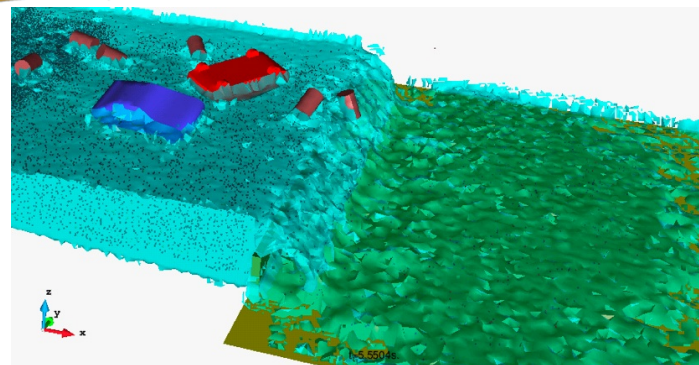
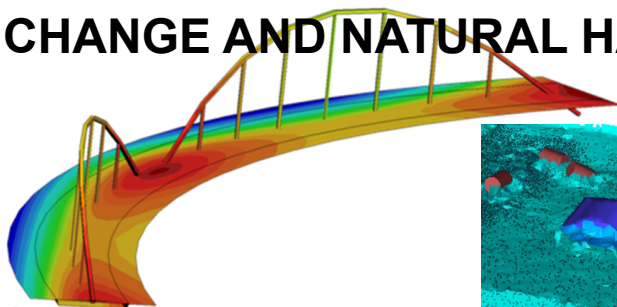
1987 - 2017  
**CIMNE**  
towards 30 years

**IC3**  
INSTITUT CATALÀ  
DE CIÈNCIES DEL  
CLIMA

**ICRA**  
Institut Català  
de Recerca de l'Aigua

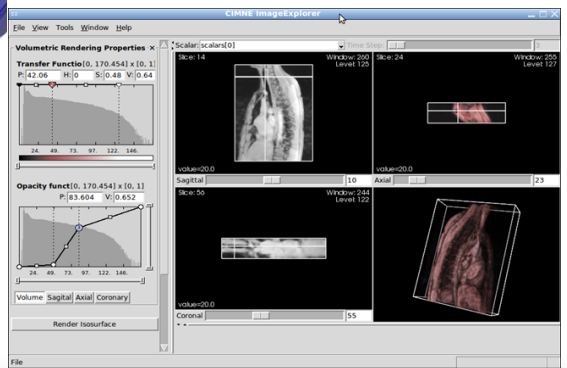
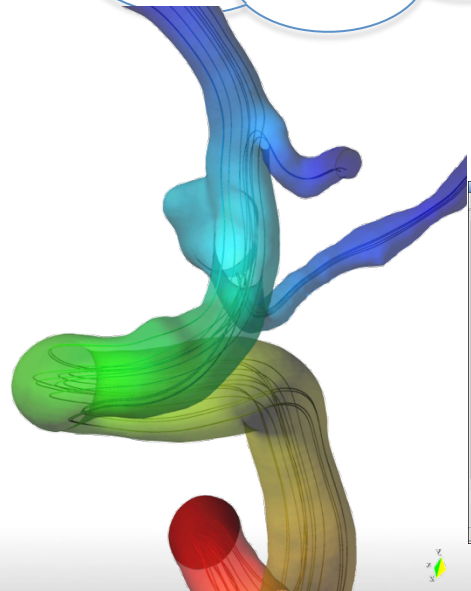
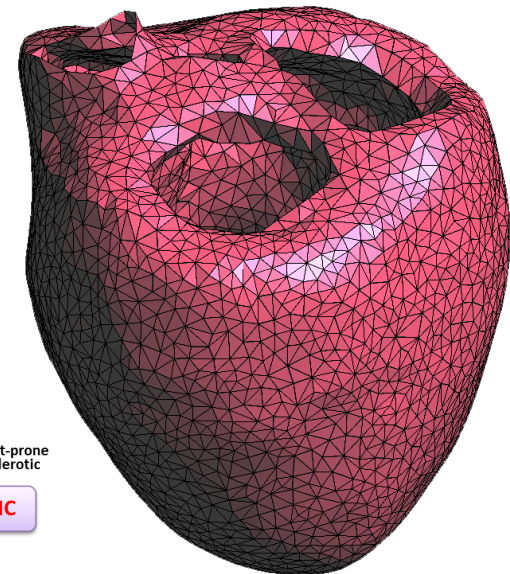
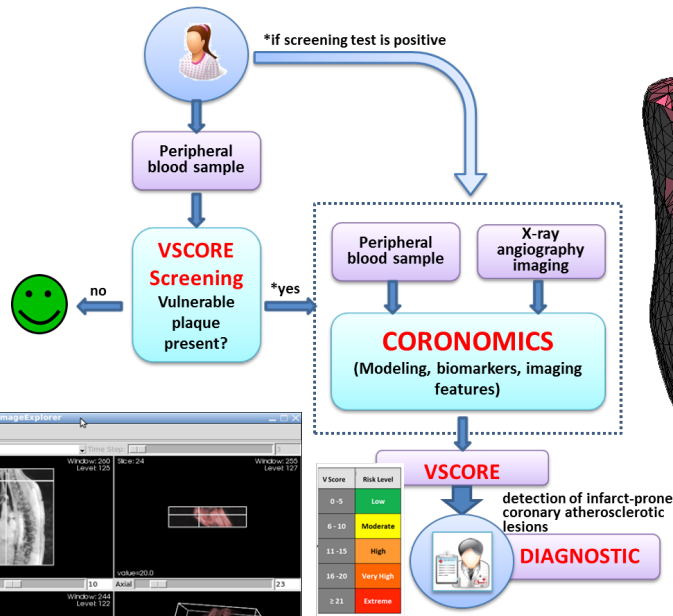
**IEEC**

# RCI RISK ASSESSMENT AND RESILIENCE OF INFRASTRUCTURE ASSOCIATED TO CLIMATE CHANGE AND NATURAL HAZARDS

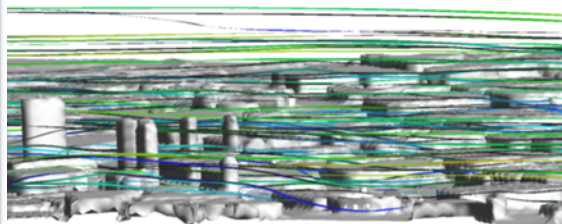




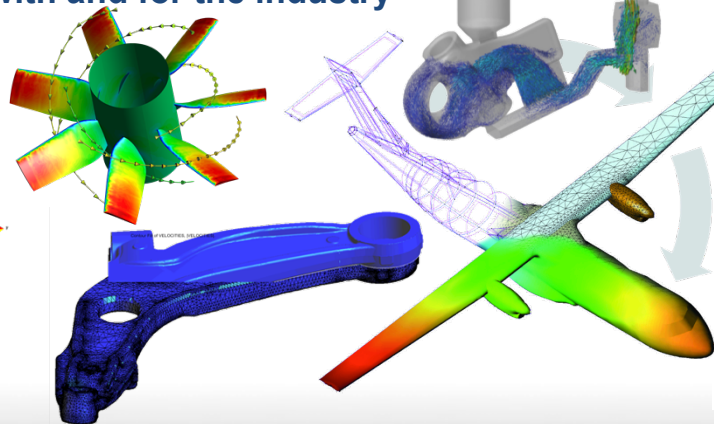
# RC2 COMPUTATIONAL MECHANICS TOOLS FOR IMPROVED DIAGNOSTIC OF DISEASE AND PERSONALIZED MEDICINE



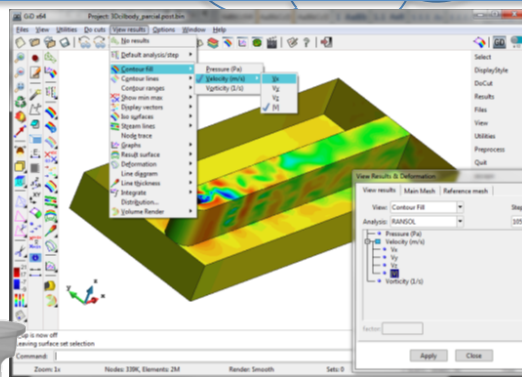
## HPC+ Cloud + Big Data



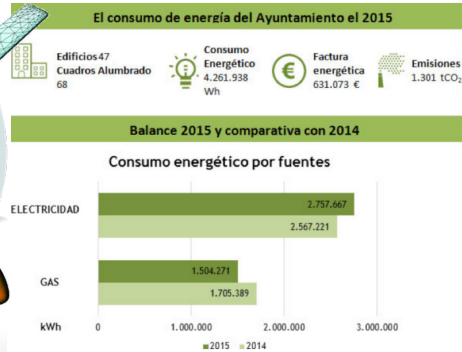
Extreme-scale simulation:  
 with and for the industry



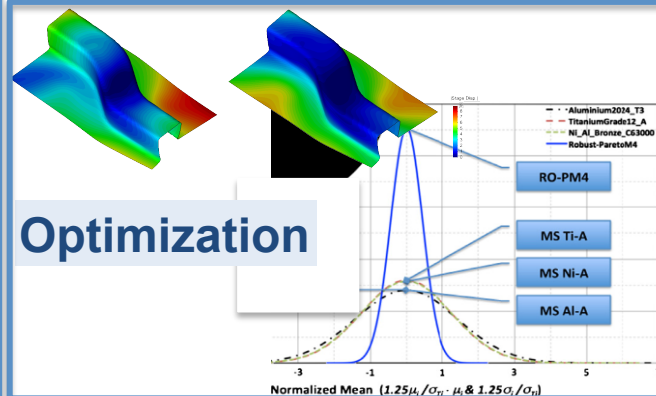
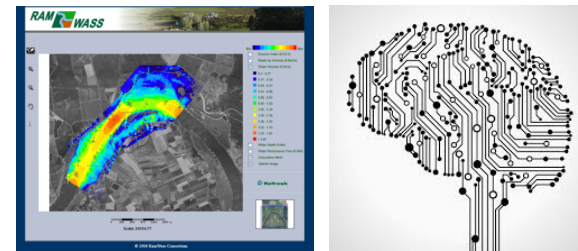
Visualization of large  
 amounts of data



## Energy management



## Artificial Intelligence & Decision Support Systems



A vocation for  
research &  
technology  
transfer

660  
RTD Competitive Projects 

16  
New companies created 

 1070  
Contracts with the  
industry

A leader in  
research  
computational  
engineering

Organizer of 27  
Scientific Congresses  
2013-2015 

 1400 publications

 260 staff  8  
ERC grants

# #Your Numerical Partner#

**/\*Main\*/**

< **Risk & Resilience Assessment** >

Goto:: <http://www.cimne.com/risk-assessment>

< **Fluid mechanics Simulation** > Goto:: [Fluid Mechanics](#)  
if **Life Sciences** Goto:: [Biomechanics Group](#) endif

< **Extreme-Scale Simulation & visualization** >

Goto:: [kratos](#) or [LargeScale](#) or [Numexas](#) or [VELaSSCo](#) ;

**#see also #**

< [Optimization](#) > and <[Energy management](#)> and <[Structural Mech.](#)>

**All (++) ) at [www.cimne.com](http://www.cimne.com)**

**/\*End\*/ ; printf ("Thanks")**

**Contact:** < [Cecilia Soriano](#) >>