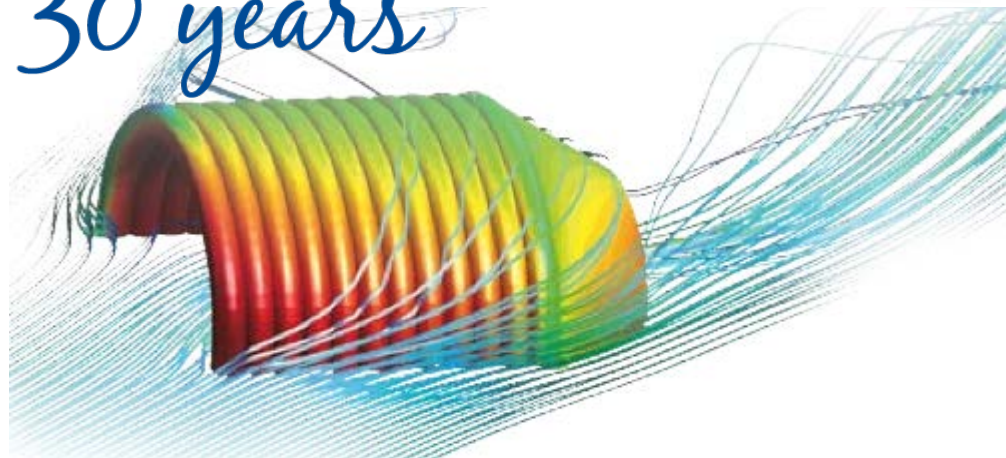
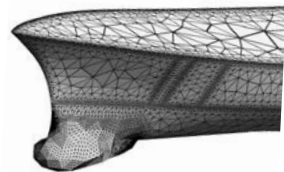
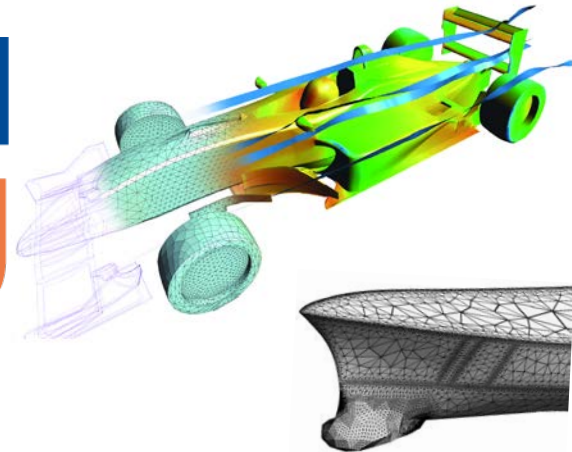


1 9 8 7 - 2 0 1 7

CIMNE^R

towards 30 years

Cecília Soriano
RTD Manager



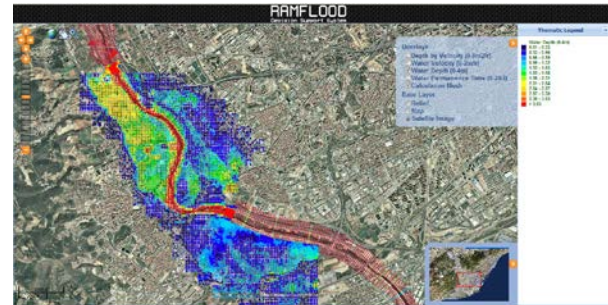
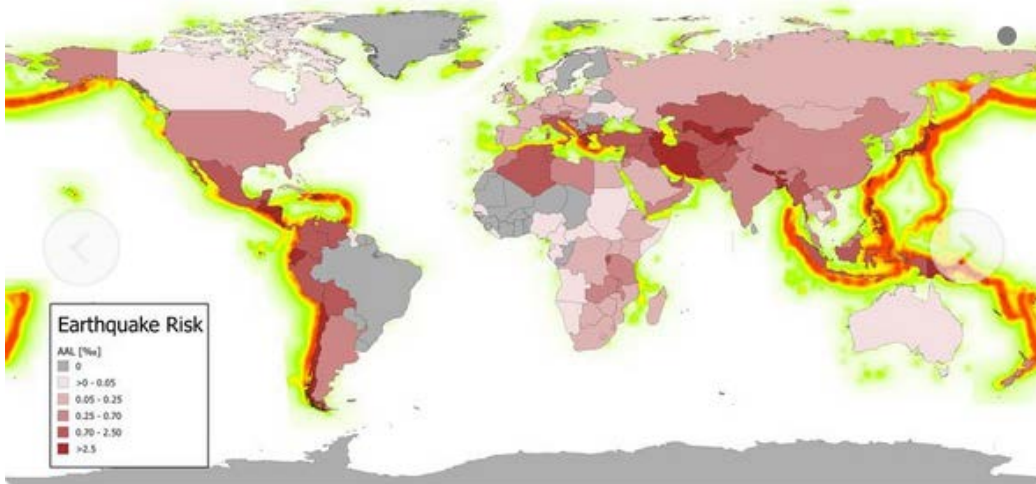
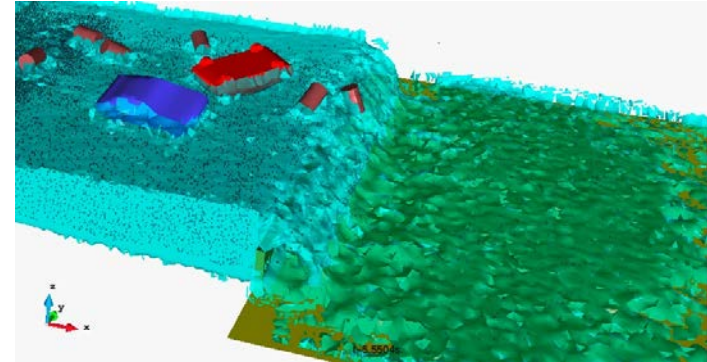
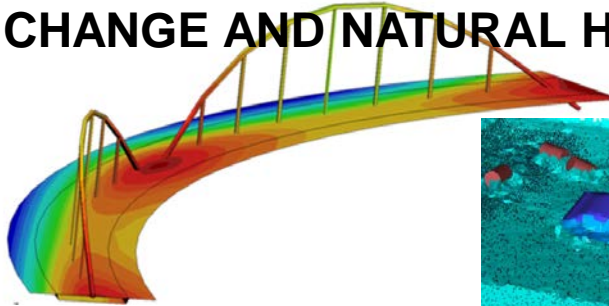
1987 - 2017
CIMNE^R
towards 30 years

IC³^R INSTITUT CATALÀ DE CIÈNCIES DEL CLIMA

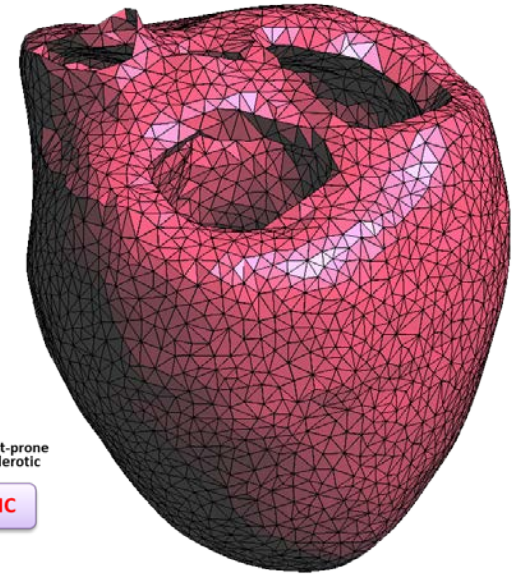
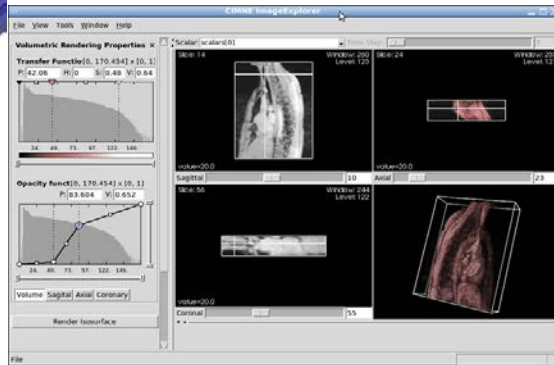
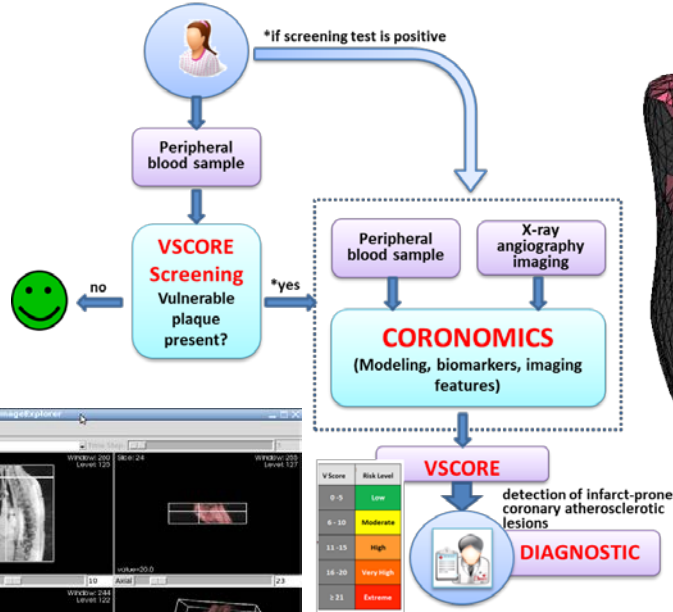
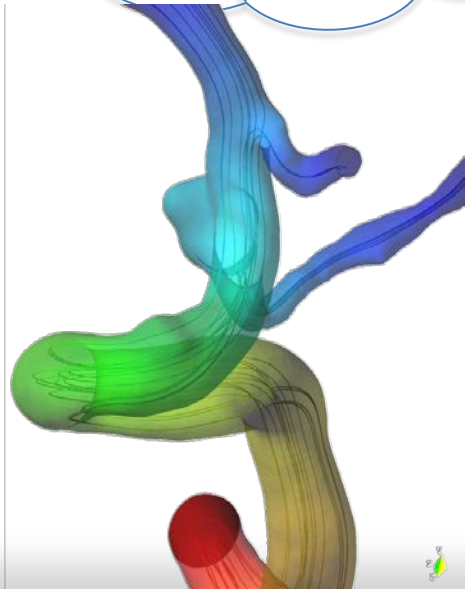
ICRA^R
Institut Català de Recerca de l'Aigua

IEEC^R

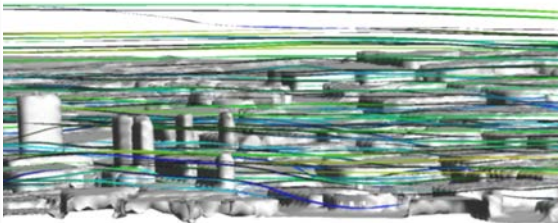
RCT RISK ASSESSMENT AND RESILIENCE OF INFRASTRUCTURE ASSOCIATED TO CLIMATE CHANGE AND NATURAL HAZARDS



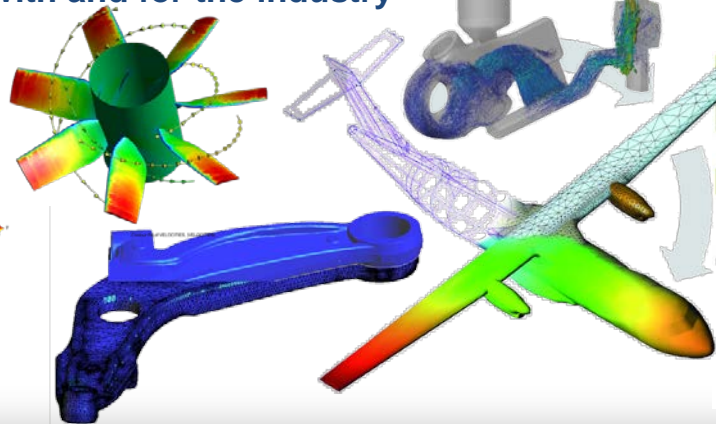
RC2 COMPUTATIONAL MECHANICS TOOLS FOR IMPROVED DIAGNOSTIC OF DISEASE AND PERSONALIZED MEDICINE



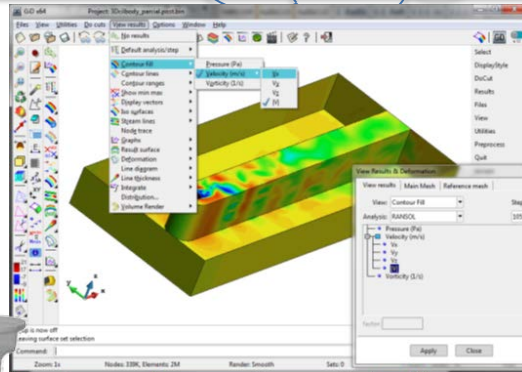
HPC+ Cloud + Big Data



**Extreme-scale simulation:
 with and for the industry**



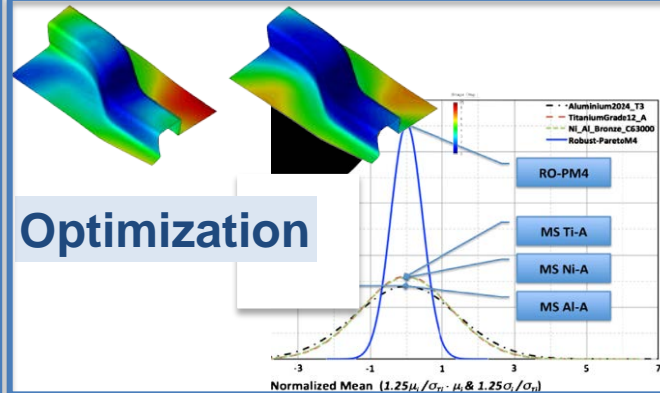
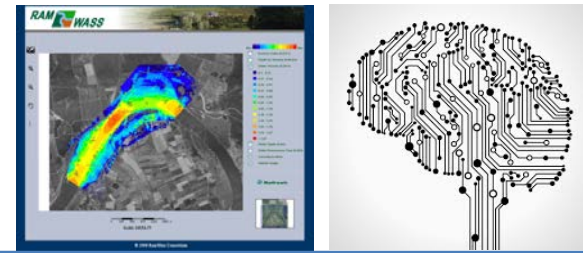
**Visualization of large
 amounts of data**



Energy management



**Artificial Intelligence &
 Decision Support Systems**



A vocation for
research &
technology
transfer

660
RTD Competitive Projects 

16
New companies created 

 1070
Contracts with the
Industry

A leader in
research
computational
engineering

Organizer of 27
Scientific Congresses
2013-2015 

 1400 publications

 260 staff  8
ERC grants

#Your Numerical Partner#

/*Main*/

< **Risk & Resilience Assessment** >

Goto:: <http://www.cimne.com/risk-assessment>

< **Fluid mechanics Simulation** > Goto:: [Fluid Mechanics](#)
if **Life Sciences** Goto:: [Biomechanics Group](#) endif

< **Extreme-Scale Simulation & visualization** >

Goto:: [kratos](#) or [LargeScale](#) or [Numexas](#) or [VELaSSCo](#) ;

#see also #

< [Optimization](#) > and <[Energy management](#)> and <[Structural Mech.](#)>

All (++) at www.cimne.com

/*End*/ ; printf ("Thanks")

Contact: <<[Cecilia Soriano](#)>>